

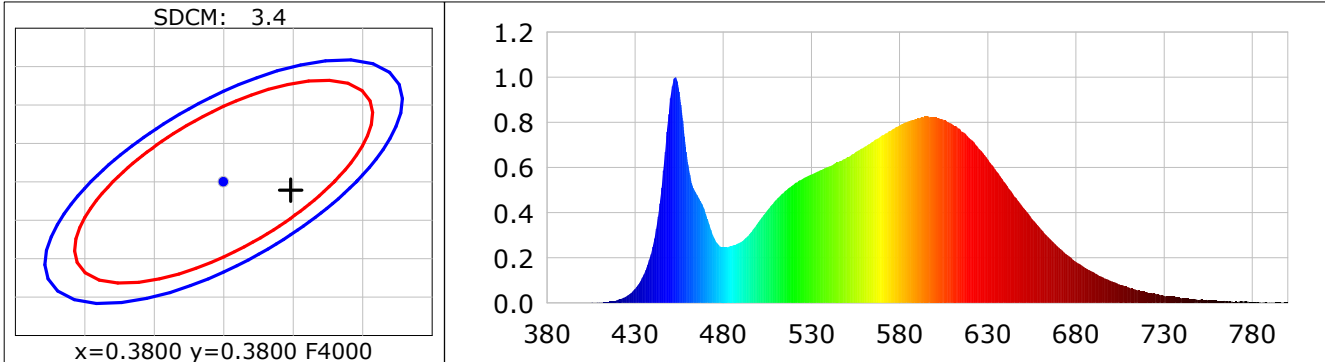
**Lightsource Test Report**

**Product Infomation**

Product Category: LED STRIP	Product Type: LED STRIP
Product Spec: THER 6	Product Number: 256
Manufacturer: TECSOLELED S.L.	Buyer: TECSOLELED S.L.

**CIE Colorimetric Parameters**

Chromaticity coordinates:  $x=0.3848$   $y=0.3789$   $u(u')=0.2271$   $v=0.3355$   $v'=0.5032$   
 CCT:  $T_c=3899K$  ( $duv=-0.00025$ ) Color Ratio:  $R=0.188$   $G=0.776$   $B=0.036$   
 Peak Wavelength: 452.7nm Half Bandwidth: 18.8nm  
 Dominant Wavelength: 579.6nm Color Purity: 0.292  
 CRI:  $R_a=83.4$ ,  $avgR(1\sim14)=76.9$ ,  $avgR(1\sim15)=76.9$  TM30:  $R_f=83$ ,  $R_g=95$   
 GAI:  $GAI\_BB\_8=92.4$ ,  $GAI\_BB\_15=100.2$ ,  $GAI\_EES=71.3$   
 R1 =82 R2 =91 R3 =96 R4 =81 R5 =82 R6 =87 R7 =85 R8 =64  
 R9 =10 R10=77 R11=80 R12=60 R13=84 R14=98 R15=76  
 Color Quality Scale:  $Q_a=82.6$ ,  $Q_f=82.8$ ,  $Q_p=82.3$ ,  $Q_g=92.4$   
 Q1 =82 Q2 =98 Q3 =79 Q4 =75 Q5 =80 Q6 =83 Q7 =85 Q8 =89  
 Q9 =98 Q10=90 Q11=86 Q12=84 Q13=84 Q14=73 Q15=76



**Photometric Parameters**

Luminous Flux: 1683.3 lm Efficiency: 162.97 lm/W Radiant Power: 5.062 W  
 Total mains efficacy: 150.91 lm/W Energy Efficiency Class: D (EU 2019/2015)

**Electric Parameters**

Voltage: 24.000V Current: 0.4304A Power: 10.33W  
 Power Factor: 1.0000 Frequency: 0.00Hz

**Test Infomation**

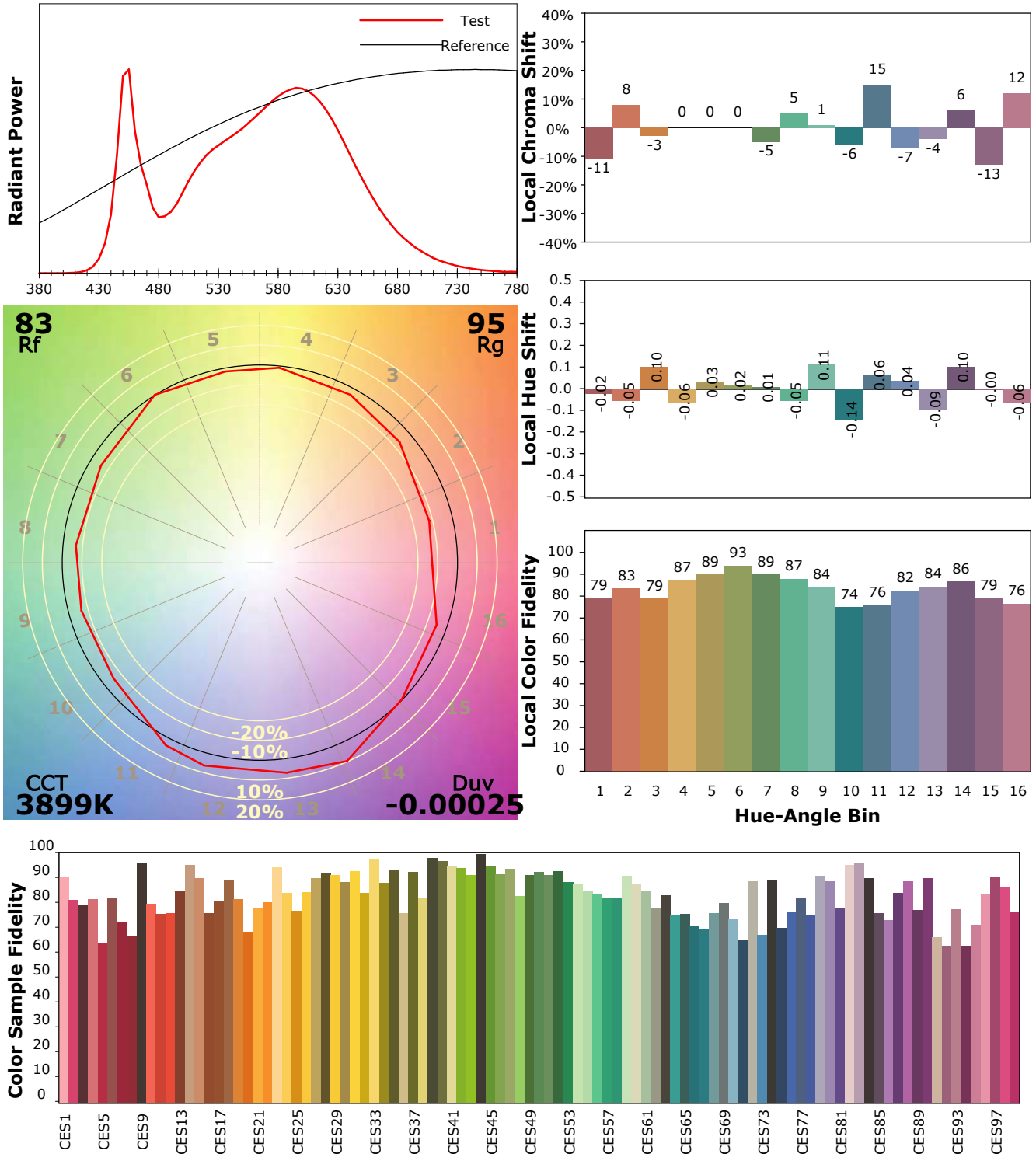
Scan Range: 380~800:1nm Photometric Method: sphere-spectroradiometer  
 Stabilization Time: 0 Sec ALC.: 1.0000 Photometric Condition: Sphere diameter: 1.50m, 4PI  
 Max of Signal: 46323 (2296) CCD Integration Time: 317.17 ms

## IES TM-30-18 Color Rendition Report

### Product Information

Product Category: LED STRIP  
 Product Spec: 21059602440539  
 Manufacturer: TECSOLED S.L.

Product Type: LED STRIP  
 Product Number: 256  
 Buyer: TECSOLED S.L.



Condition: Tx:22.3°C, Ti:19.9°C, R.H.:60%  
 Test Lab: TECSOLED S.L.  
 Operator: JORDAN GIL DIAZ

Test Device: Inventfine CMS-2S (Plus)  
 Test Time: 2021-10-28 15:32:33  
 Inspector: